



iwTrader User Manual

1. INTRODUCTION	3
1.1 USER LOGIN	3
2 USER INTERFACE.....	5
2.1 OVERVIEW	5
2.2 ORDER TICKET WINDOW.....	5
2.2.1 Limit Order.....	5
2.2.2 Auction Order	7
2.2.3 Enhanced Limit Order.....	7
2.2.4 FAK	8
2.2.5 FOK.....	8
2.3 PORTFOLIO AND ACCOUNT BALANCE WINDOW	9
2.3.1 Portfolio Window	9
2.3.2 Account Balance Window.....	10
2.4 MARKET QUOTE WINDOW AND ORDER BOOK	10
2.4.1 Market Data Window	10
2.4.2 Order Book.....	11
2.4.3 Trade Summary.....	16
2.4.4 Order History	16
2.4.5 User Setting	17
2.5 USER PREFERENCE MENU	17
2.5.1 Trading Market	17
2.6 USER INFORMATION.....	18
2.7 DISCLAIMER	19
2.8 PRIVACY.....	20
3. USEFUL TIPS.....	20
4. LEVEL OF SECURITY.....	20

1. Introduction

The iwTrader program is a comprehensive all-in-one trading tool which enables a user to view real-time stock information; place, cancel, and change orders; monitor order status; check the account balance. The iwTrader supports IE 6 or above.

1.1 User login

- a. Open up Internet Explorer, the Login window will pop up (Fig.1.1).
- In the login page, user can easy access website information at the footer, e.g. Disclaimer, Privacy.
- b. If correct user name and password is typed, the All-in-one Interface will start up itself (Fig.1.2) .

Fig. 1.1 Login Window



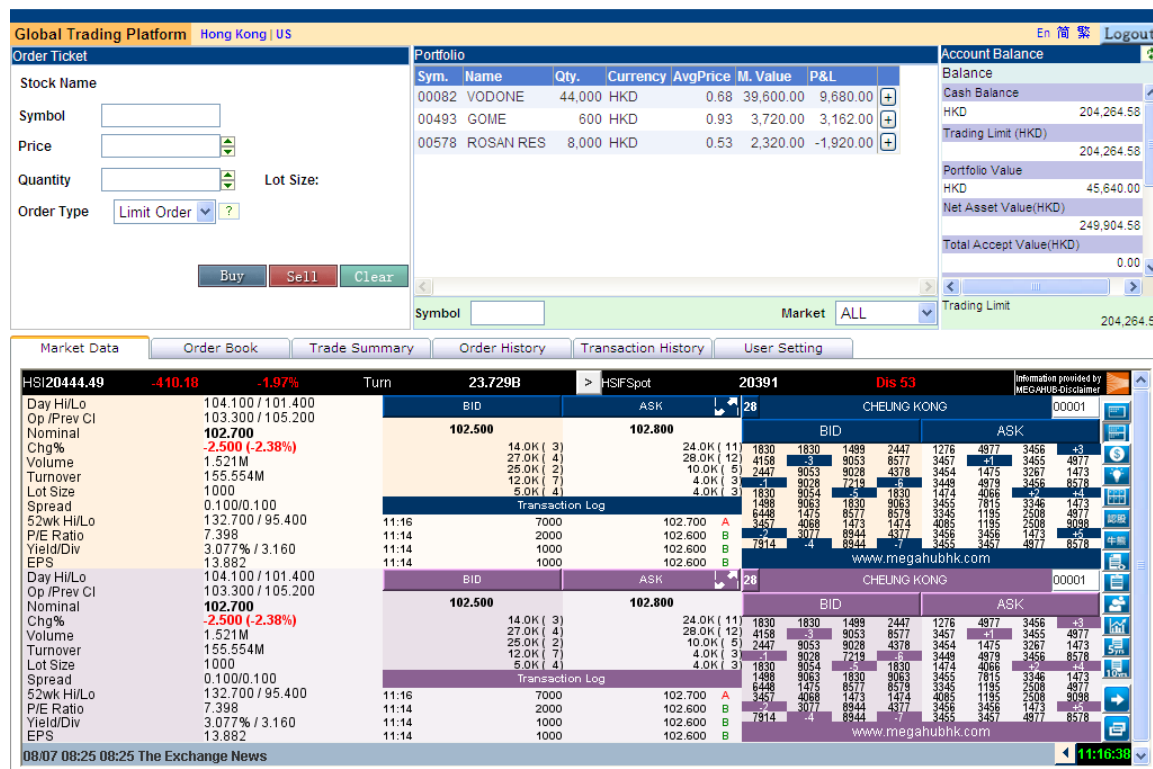
In order to protect the security of our customer's account information, your "itrader account" will be suspended temporarily if you input the incorrect password three times. Then you must contact our customer service 2928-9008 to reactivate your account.

If you have any enquiry about on your securities trading, please contact us by telephone 2928-9008, by fax 2540-9399 or [email](#) .

For details regarding eBroker Systems Limited's iwTrader operation, please read through our ["user manual"](#) .

[Disclaimer](#) | [Privacy](#)
Copyright © 1998- 2013 eBroker Systems Limited. All rights reserved.

Fig. 1.2 All-in-one Interface



Login Window

Correct user name and password must be typed in. If an incorrect user name or password is typed, error message will popup (Fig. 1.4). Click “Confirm” to type in the correct user name and password again. For three consecutive input of wrong user name or password, your account will be suspended (Fig. 1.5). You will then have to call the customer hotline to re-activate the account.

Fig. 1.4 Wrong Entry

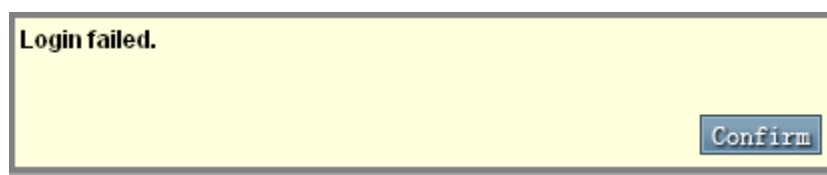
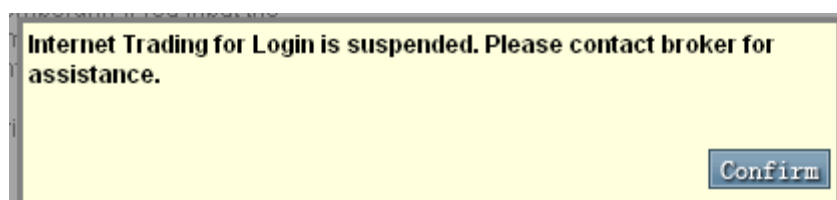


Fig. 1.5 Suspend account with 3 invalid login



2 User interface

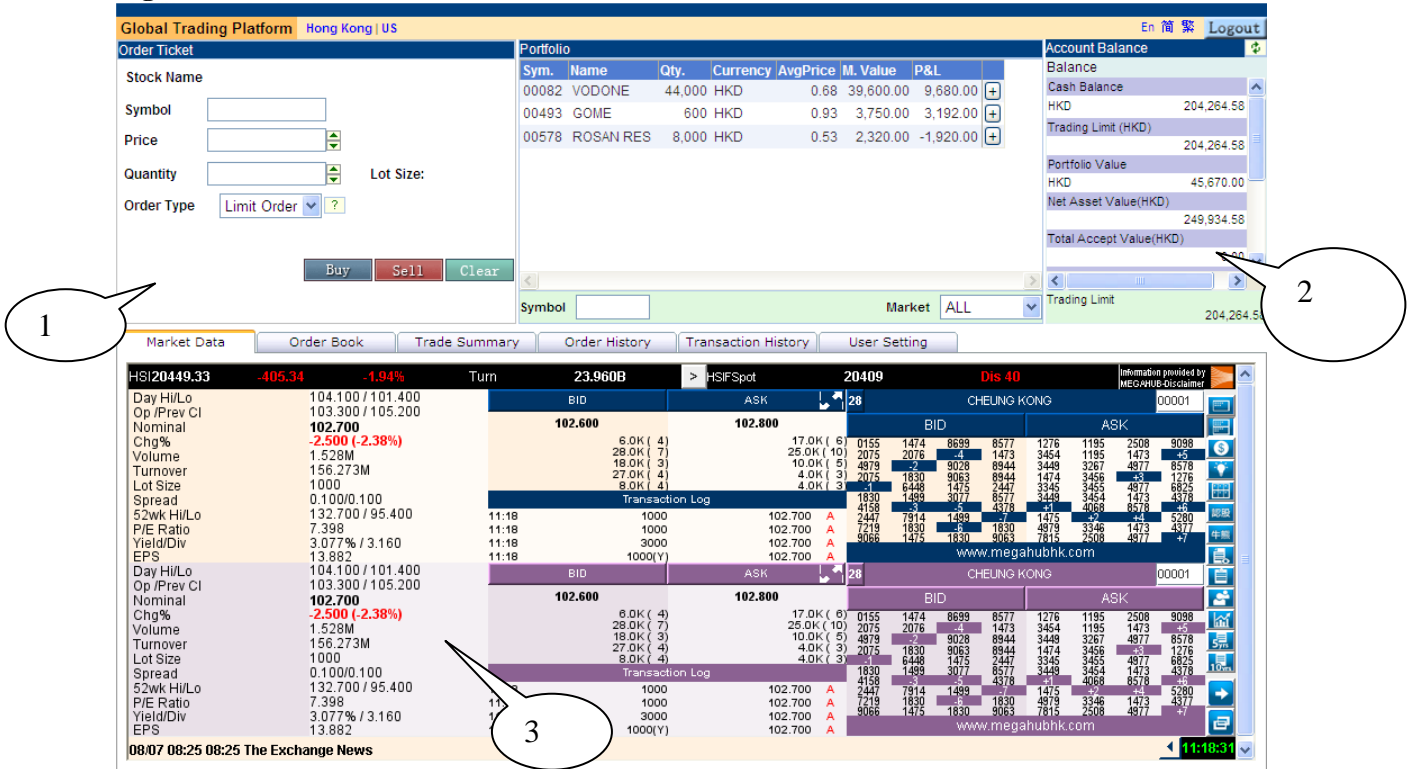
2.1 Overview

After the successful login, the All-in-one Interface will pop up automatically (Fig. 2.1).

The All-in-one Interface contains 3 sections:

1. Order Ticket Window
 2. Portfolio and Account Balance Window
 3. Market Quote and Order Book
- (Please contact your broker with market data package subscription)

Fig. 2.1 All-in-one Interface



2.2 Order Ticket Window

iwTrader provides Buy/Sell shortcut key to speed up placing orders. User presses [B] for buy or [S] for sell, orders can be placed directly.

2.2.1 Limit Order

1. To place order, enter the stock symbol, the quantity and the price. Then, press the Buy or Sell button according to order type (Fig. 2.2).
2. A confirmation box will pop up and the order can be confirmed by entering the password (Fig. 2.3) and press "Confirm". Should "Close" is pressed or invalid password is entered, the order would not be placed. If the order is placed successfully, the order sent confirmation message will pop up (Fig. 2.4) and the order details will then be displayed in the order book.
3. For user to make a clear view of the transaction details are shown in the order confirmation box.

Fig. 2.2 Order Ticket

The image shows an "Order Ticket" form for the stock "CLP HOLDINGS". The form includes fields for Symbol (00002), Price (38), Quantity (500), Order Type (Limit Order), and Condition. A callout bubble labeled "Type Box" points to the Order Type dropdown menu. Below the form are buttons for "Buy", "Sell", and "Clear".

Stock Name	CLP HOLDINGS		
Symbol	<input type="text" value="00002"/>		
Price	<input type="text" value="38"/>	<input type="button" value="↑"/>	<input type="button" value="↓"/>
Quantity	<input type="text" value="500"/>	<input type="button" value="↑"/>	<input type="button" value="↓"/>
Order Type	<input type="text" value="Limit Order"/>	<input type="button" value="?"/>	Lot Size: 500
Condition	<input type="text"/>		

Fig. 2.3 Confirm Order Box

The image shows a "Confirm Order" box for a "Buy Limit Order" for "CLP HOLDINGS". The order details are: Symbol 00002, Price 38 HKD, and Quantity 500. Below the order details is a summary table showing the Amount (19,000.00), Transaction Cost (22.71), and Consideration (19,072.71). At the bottom are buttons for "Confirm" and "Close".

Buy	
Limit Order	
Stock Name	CLP HOLDINGS
Symbol	00002
Price	38 HKD
Quantity	500
<hr/>	
Amount	19,000.00
Transaction Cost	22.71
Consideration	19,072.71

The currency will be shown after "Price" and "Stop Price" (for Stop Order).

Fig. 2.4 Order Sent Box



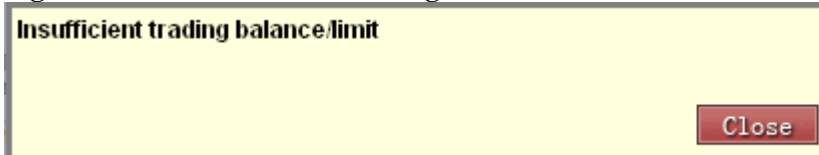
Over the Limit Orders

If the order exceeds the credit limit, price limit or stock position, a message dialog box will pop up. This order will not be accepted and not be shown in the order book. (Fig. 2.5a and Fig. 2.5b)

Fig. 2.5a Insufficient stock position



Fig.2.5b Insufficient trading balance



2.2.2 Auction Order

The Auction order type will show with specific entitlement (Fig.2.6). Type in the symbol, price and quantity by choosing the auction order type, and auction order will be placed after clicking on the Buy/ Sell button. Auction order can only be placed during Auction period.

Fig. 2.6 Auction Order



2.2.3 Enhanced Limit Order

The Enhanced Limit Order type will show with specific entitlement (fig 2.7). Type in the symbol, price and quantity by choosing the enhanced limit order type, an enhanced limit order will be placed after clicking on the Buy/Sell button. An enhanced limit order will allow matching of up to 10 prices at a time provided that the traded price is not worse than the input price.

Fig. 2.7 Enhanced Limit Order

Order Ticket

Stock Name **CHEUNG KONG**

Symbol

Price

Quantity Lot Size: 1,000

Order Type ?

Condition

2.2.4 FAK

Fill and Kill. The Order can be filled for as much quantity as possible up to the specified quantity, and the remainder will be cancelled (Fig.2.9).

Fig.2.9 FAK

Order Ticker

Stock Name **HSBC HOLDINGS**

Symbol

Price

Quantity

Order Type ?

Condition

Market Data

2.2.5 FOK

The Order can be filled only if there is enough quantity much as the specified. Otherwise, the entire order will be cancelled (Fig. 2.10).

Fig.2.10 FOK

Order Ticker

Stock Name **HSBC HOLDINGS**

Symbol

Price

Quantity

Order Type ?

Condition

2.3 Portfolio and Account Balance Window

2.3.1 Portfolio Window

The [Portfolio] window shows the account’s portfolio in all markets (Fig.2.11).

Portfolio’s market value can be calculated either with Pre-close price or Nominal by broker’s setting. The average price of the portfolio is also shown for reference.

The symbol and quantity will copy into the Order Ticket while clicking the symbol in the portfolio window. The symbol name will be shown completely when mouse moves over.

Fig. 2.11 Portfolio

Portfolio					Portfolio			
Sym.	Name	Qty.	Currency	AvgPrice	Currency	AvgPrice	M. Value	P&L
00001	CHEUNG KON...	3,000	HKD	104.0	KD	132.57	3,027,200.00	-1,107,100.00
00002	CLP HOLDIN...	8,000	HKD	60.0	KD	53.35	826,925.00	-137,950.00
00003	HK & C CLP HOLDINGS		HKD	22.9	KD	1.90	2,299,000.00	181,500.00
00004	WHARF HOLD...	1,000	HKD	20.0	KD	115.00	4,646,000.00	-2,260,380.00
00006	HK ELECTRI...	5,000	HKD	55.0	KD	1.23	2,460.00	-1,570.00

1 2 3 4 5

Symbol Market ALL

Symbol Market Hong Kong

- Input a specific Symbol, press ENTER key to start the filtering, for Hong Kong Stock, the system will auto pad “0” for integer string to complete the symbol code (eg. Enter 5 for 00005).
- Select “All” or “Hong Kong” Market from the dropdown list and portfolio for will be shown.
- Click the page number at the bottom to go to the specified page.
- Click on the “+” button at the end of the row and the following data will be shown:

Fig. 2.12 Portfolio Detail

Position Detail	
Symbol	00001
Quantity	119,000
Market Value	7,889,700.000
P&L Ratio	-36.25 %
Margin Ratio	0
Accept Value	0
Queued Quantity	0

Close

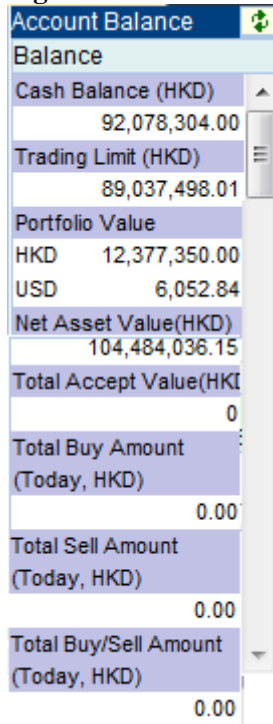
2.3.2 Account Balance Window


The following information will be shown in the [Account Balance] window (Fig.2.13). All information will be shown:

- Cash Balance (by currency)/
- Trading Limit (HKD equivalent)/
- Portfolio value (By trading currency)/
- Net Asset Value (HKD equivalent)/
- Total Acceptable Value (HKD equivalent)/
- Total Buy Amount (Today, HKD equivalent)/
- Total Sell Amount (Today, HKD equivalent)/
- Total Buy/Sell Amount (HKD equivalent)

Click on the <Refresh> button on the top  to retrieve updated information.

Fig.2.13 Account Balance



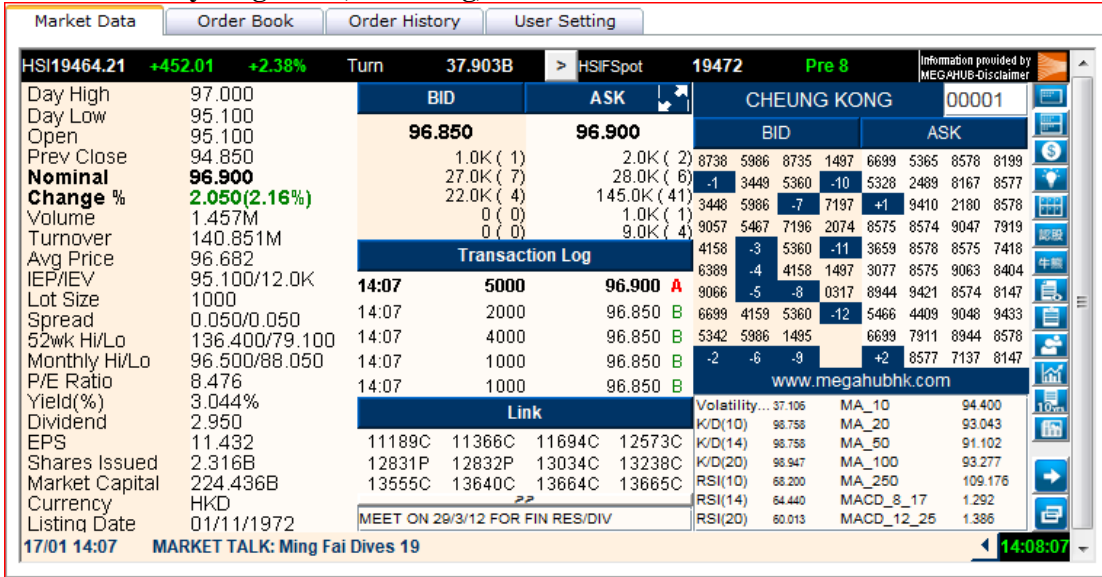
Account Balance 	
Balance	
Cash Balance (HKD)	92,078,304.00
Trading Limit (HKD)	89,037,498.01
Portfolio Value	
HKD	12,377,350.00
USD	6,052.84
Net Asset Value(HKD)	104,484,036.15
Total Accept Value(HKD)	0
Total Buy Amount (Today, HKD)	0.00
Total Sell Amount (Today, HKD)	0.00
Total Buy/Sell Amount (Today, HKD)	0.00

2.4 Market Quote Window and Order Book

2.4.1 Market Data Window

The real time market quote will be displayed in [Market Data] window. (Fig.2.14) Please contact your broker with market data package subscription.

Fig. 2.14 Market Data
Market Data by Megahub (Streaming):



Market Data by Megahub (snapshot):



2.4.2 Order Book

Order book lists out Today's order information, and allows print order book with [Print] button.

There are different sections in the [Order Book] for orders(Fig.2.15):

Fig. 2.15 Order Book

Date (Date Time of HK) / Order Number / Buy/Sell / Symbol / Order Price/ Avg Price (filled) / Order Qty / Filled Qty / Status / Remarks / Change or Cancel

Market Data		Order Book		Order History		User Setting			
Date(Date Time Of HK)	Order Number	Buy/Sell	Symbol	Price	Avg Price	Quantity	Filled Qty	Status	Remark
01-17 14:04	120117000073	Buy	00001	56.000	0.000	3,000	0	Inac	
01-17 14:01	120117000069	Buy	00001	58.000	0.000	3,000	0	Reje	Bid is below market by 29% This order being rejected by OMS because of violation of OMS rules
01-17 10:51	120117000032	Buy	00001	104.000	0.000	1,000	0	Reje	Bid is over market by 26% This order being rejected by OMS because of violation of OMS rules

Click order number to check order detail

Date (Date Time of HK)

The time order placed.

Order Number

This is a reference no. generated by the system. Quote and refer to this number for any queries. Click on the order number to show order details as below:

Order Details			
Limit Order			
Date(Date Time Of HK)	01-20 10:25		
Order Number	120120000002		
Buy/Sell	Buy		
Symbol	00001		
Price	84.00	Avg Price	82.30
Quantity	1,000	Filled Qty	1,000
Status	Comp		
Close			

Buy/Sell

Buy or Sell Order

Symbol

The stock symbol of the order

Price

The order price

Avg Price

The order's average filled price

Qty



Order quantity

Filled Quantity

If this is a partial completed order, this column will show the quantity filled.

Remarks

Reason for order rejection will be shown. (all rejected orders will be highlighted in red)

Market Data		Order Book		Order History		User Setting			
Status	All Order	<input type="button" value="Go"/>				Print  Refresh 			
Date(Date Time Of HK)	Order Number	Buy/Sell	Symbol	Price	Avg Price	Quantity	Filled Qty	Status	Remark
01-17 14:04	120117000073	Buy	00001	56.000	0.000	3,000	0	Inac	
01-17 14:01	120117000069	Buy	00001	58.000	0.000	3,000	0	Reje	Bid is below market by 29% This order being rejected by OMS because of violation of OMS rules
01-17 10:51	120117000032	Buy	00001	104.000	0.000	1,000	0	Reje	Bid is over market by 26% This order being rejected by OMS because of violation of OMS rules

Click order number to check order detail

Status

Orders will have one of the following statuses. For orders with a Pending status for a long time or Inactivate status, cancel the order and call the customer hotline if there is any query

Status	Full Name	Description
Comp	Complete	Order wholly Completed
Pend	Pending	Order stored in the system and not yet sent to the Exchange
Part	Partial	Order Partially Completed
Queu	Queue	Order queuing in the Exchange
Inac	Inactive	Order pending in the system and requires approval
Canc	Cancel	Order Cancelled
Reje	Reject	Order Rejected
Conf	Confirmed	Order completed and confirmed

Change

Change the selected order

Cancel

Cancel the selected order

2.4.2.1 Change Order

1. Select the incomplete order and click <Change>. The change order box will pop up. (Fig. 2.17).
2. Type in the new quantity and price.
3. Enter the trading password (the change will not be submitted if wrong password entry) .
4. Click <confirm> to submit the change.

Fig.2.17 Change Order

Change Order	
Limit Order	
Order Number	120118000054
Market	Hong Kong
Buy/Sell	Buy
Symbol	00002
Stock Name	CLP HOLDINGS
Price	38.00 HKD
Avg Price	0.00 HKD
Quantity	500
Filled Qty	0
Status	Pend
Change To	38.00
Change To	
<input type="button" value="Confirm"/> <input type="button" value="Close"/>	

The currency according to order symbol will be shown after “Price”, “Avg Price” & “Stop Price” (for Stop Order).

Enter the change item, can be either price or quantity and enter password to confirm the change. The New Price or Quantity can be left blank if there is no change required.

2.4.2.2 Cancel Order

1. Select the incomplete order and click <Cancel>, then the cancel box will pop up. (Fig 2.18)
2. Enter the trading password (the cancel will not be submitted if wrong password entry). The password entry can be cancelled as to the broker’s request.
3. Choose <Confirm> to proceed.

Fig. 2.18 Cancel Order

Cancel Order

Limit Order

Date(Date Time Of HK) **03-31 13:06**

Order Number **110331000004**

Buy/Sell **Buy**

Symbol **00001**

Stock Name **CHEUNG KONG**

Status **Pend**

User Password

2.4.2.3 Order Detail

Click on the Completed order (Fig 2.19) to pop up Order Detail with trade details (Fig 2.20).

Fig 2.19

Market Data		Order Book	Trade Summary	Order History	User Setting	Settlement		
Status: All Order	<input type="button" value="Go"/>					Print	Refresh	
Date(Date Time Of HK)	Order Number	Buy/Sell	Symbol	Price	Avg Price	Quantity	Filled Qty	Status
03-31 12:36	110331000001	Sell	00001	100.000	0.000	1,000	0	Reje
03-31 13:03	110331000002	Buy	00001	80.000	0.000	1,000	0	Reje
03-31 13:04	110331000003	Buy	00001	120.000	0.000	1,000	0	Reje
03-31 13:06	110331000004	Buy	00001	67.000	65.900	10,000	10,000	Comp
03-31 13:14	110331000005	Buy	00001	89.000	0.000	10,000	0	Queu

Click order number to check order detail

Fig 2.20

Order Details

Limit Order

Date(Date Time Of HK) **03-31 13:06**

Order Number **110331000004**

Buy/Sell **Buy**

Symbol **00001**

Price **67.000** Avg Price **65.900**

Quantity **10,000** Filled Qty **10,000**

Status **Comp**

Trade No.	Price	Quantity	Execution Time
OT.000000000001	65.900	10,000	13:13:36

2.4.2.4 Order book Filter

Select the desired status (All, Canc, Comp, Queu, Part, Reje, Pend, Inac, Conf) using the order status filter and click on the <Go> button to display on the orders with the selected order status.

Fig. 2.21 Order Book Filter

Number	Buy/Sell	Symbol	Price	Avg Price	Quantity	Filled Qty	Status
1000001	Sell	00001	100.000	0.000	1,000	0	Reje
1000002	Buy	00001	80.000	0.000	1,000	0	Reje
1000003	Buy	00001	120.000	0.000	1,000	0	Reje
1000004	Buy	00001	67.000	65.900	10,000	10,000	Comp
1000005	Buy	00001	69.000	66.000	10,000	10,000	Comp
1000006	Buy	00001	66.000	65.850	10,000	10,000	Comp

Click order number to check order detail

2.4.3 Trade Summary

The Trade Summary shows the total quantity, average price and transaction amount for each stock per buy or sell side.

Fig. 2.22 Trade Summary

Symbol	Buy/Sell	Sum Quantity	Avg Price	Transaction Amount
00001	Buy	30,000	65.917	1,977,500.000
00005	Sell	400	77.850	31,140.000
00005	Buy	40,000	77.950	3,118,000.000

2.4.4 Order History

Display the order history in 2 days/ 14 days / 28 days, pressing [Print] to print out order history for keeping records. (Fig. 2.23) User can also select to show orders of a preset status.

Fig. 2.23 Order History

Date(Date Time Of HK)	Buy/Sell	Symbol	Price	Avg Price	Quantity	Filled Qty	Status
03-03 17:56	Buy	00005	84.200	0.000	400	0	Reje
03-03 18:00	Buy	00005	84.050	0.000	400	0	Reje
03-03 19:08	Buy	110303000005	122.900	0.000	1,000	0	Reje
03-16 15:03	Buy	110316000018	79.000	0.000	400	0	Canc
03-18 15:11	Buy	110318000008	6.940	0.000	3,000	0	Reje
03-18 16:40	Buy	110318000012	79.000	0.000	1,000	0	Reje
03-25 16:21	Sell	110325000010	123.000	0.000	116,000	0	Reje
03-25 16:27	Sell	110325000011	300.000	0.000	2,000	0	Reje
03-25 16:41	Sell	110325000012	4.500	0.000	8,000	0	Reje
03-28 16:43	Buy	110328000005	65.300	62.450	2,000	2,000	Comp
03-30 10:43	Buy	110330000001	125.000	0.000	1,000	0	Reje
03-30 11:26	Buy	110330000002	82.050	0.000	400	0	Canc
03-30 12:00	Buy	110330000003	125.900	0.000	1,000	0	Reje
03-30 12:01	Buy	110330000004	125.900	0.000	1,000	0	Reje
03-30 12:16	Buy	110330000005	125.900	0.000	1,000	0	Reje
03-30 12:17	Buy	110330000006	11.200	0.000	1,000	0	Reje
03-30 12:17	Buy	110330000007	35.800	35.700	1,000	1,000	Comp

2.4.5 User Setting

Allow the user to change the login/trading password (Fig.2. 24)

Fig. 2.24 Change A/C Info

Market Data | Order Book | Order History | **User Setting**

Change Password

Change Password

Old Password

New Password

Retype New Password

Submit

Clear

Please note that:

1. New password must consist of 6-12 numbers and alphabets.
2. New password cannot contain 3 same letters or numbers consecutively.

Options

User can also click on <Options> to select whether to go through Risk Disclosure Page every time during login process.

Market Data | Order Book | Order History | **User Setting**

Change Password

Options

Do not show Risk Disclosure

Submit

2.5 User Preference Menu

User can make the following setting (Fig.2.29):
Trading Market/Language/Logout

Fig. 2.29 User Setting

Global Trading Platform | Hong Kong | **En 簡繁 Logout**

2.5.1 Trading Market

User can select the trading market as desired if available (Fig. 2.30)

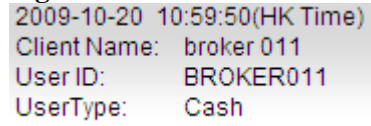
Fig. 2.30 Trading Market

Global Trading Platform | **Hong Kong**

2.6 User Information

The account information will be displayed. (Fig. 2.33)

Fig. 2.33 User Information

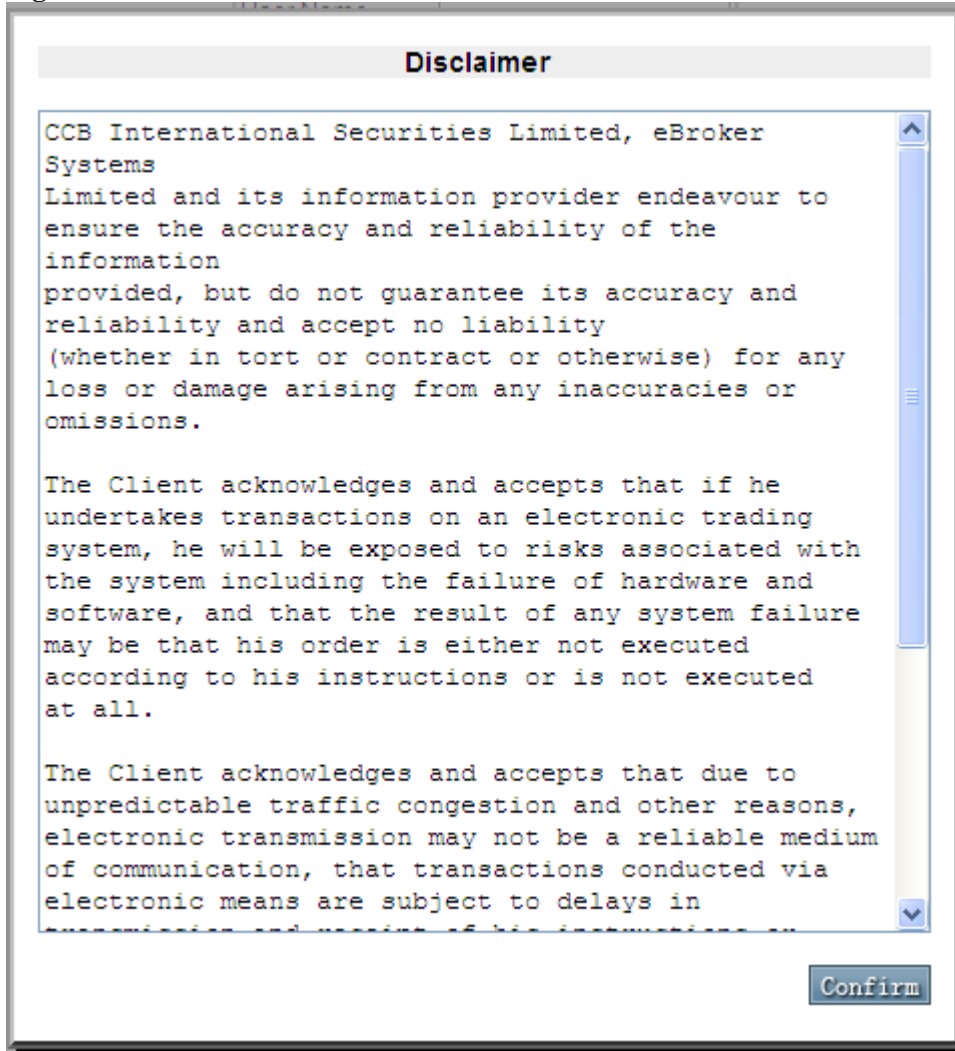
A screenshot of a user information display. The text is as follows:

2009-10-20 10:59:50(HK Time)
Client Name: broker 011
UserID: BROKER011
UserType: Cash

2.7 Disclaimer

Show the disclaimer statement. (Fig. 2.34)

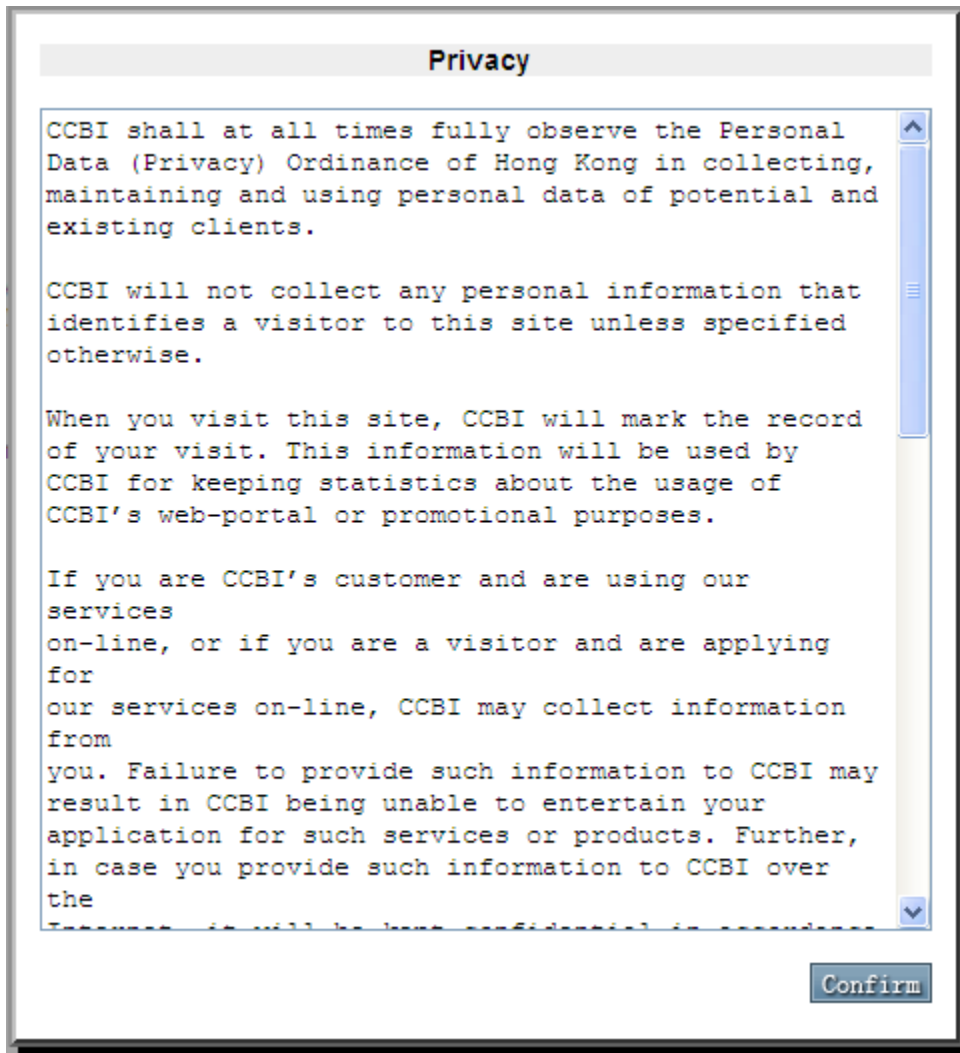
Fig. 2.34 Disclaimer



2.8 Privacy

Display Privacy statement

Fig. 2.35 Privacy Statement



3. Useful Tips

- i. Remember to **change your login password regularly** in order to protect yourself against others to login your account.
- ii. **Always logout your trading screen** when you leave by using the logout button.

4. Level of Security

In order to protect the Internet Client, we have adopted different industrial standard and security requirements including data encryption, client password authentication and protection, server certificate, firewall protection.